

PRELIMINARY

Loading Machine | Efficient materials handling in modern recycling

ENGINE	128 kW 171 HP
WEIGHT	27.5 t - 29 t 60,627 lbs - 63,934 lbs
REACHES	12.6 m (41.4') 13.7 m (45')

THE NEW HIGH CLASS POWER- HOUSE FROM TEREX FUCHS

- ▶ High-performing 128 kW Deutz turbocharged Diesel engine (TIER III/COM III/EPA III)
- ▶ Operating weight 27.5 - 29 t (60,627 - 63,934 lbs)
- ▶ Efficient hydraulic system
- ▶ Improved lifting capacities
- ▶ Multi functional display
- ▶ Low noise level

RECYCLING MACHINE

MHL 340



HIGH PERFORMANCE

LIFT HIGHER. REACH FURTHER

THE TOP PLAYER IN



CONTRIBUTING TO YOUR PROFIT IN THE RECYCLING BUSINESS

Success requires performance. And this is what the MHL 340 provides, in a whole new dimension - performance through high lifting capacities, long reach and fast working cycles. And all that at an operating weight of 27.5 (60,627 lbs) through 29 tonnes (63,934 lbs).

FAR-REACHING AND STABLE

We have designed the enlarged, 2.7 m (8.9') wide undercarriage, mindful of huge recycling missions. The optimized loading system geometry and the new boom design provide enhanced lifting capacities throughout the complete operating range. And you have a choice of 12.6 m (41.4') or 13.7 m (45') reach.



WORK FASTER

THE RECYCLING COMPETITION

FAST AND SMOOTH

The new, 2-circuit hydraulic system is made to your advantage. Optimum utilization of hydraulic performance allows for fast working cycles; the harmonic, jolt-free control enables precise and smooth motions. Simultaneous movements of dipperstick/ grab and dipperstick/ boom are possible. Minimum power loss lowers fuel consumption and cost.

MACHINE FEATURES

AT A GLANCE

- ▶ Increased reach and lifting capacities through newly designed undercarriage and optimized lifting geometry
- ▶ Higher maximum operating weight
- ▶ 2-circuit hydraulic system with very high degree of efficiency and minimum power dissipation
- ▶ Fast working cycles and load-independent, combined movements





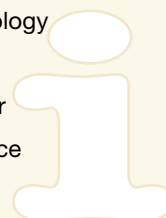
EVERYTHING WITHIN VIEW. EVERYTHING UNDER CONTROL

CONTROLS THAT ADD VALUE



DISPLAY FEATURES AT A GLANCE

- ▶ Large, easy-to-scan color display
- ▶ Comfortable user interface; clear symbology and text messages
- ▶ Quick data display and readout allow for rapid reaction, thus preventing maintenance problems



MACHINE DATA - STRAIGHT TALK

The new control system tells you what's going on – plainly and clearly. A high-resolution color display concisely and unmistakably shows all relevant machine information, including fuel remaining, coolant temperature, hydraulic oil temperature or other information: Thanks to a quick readout, all essential data are promptly displayed, allowing for timely reaction, thus preventing maintenance problems.

BENEFICIAL TO HEALTH AND SITUATIONAL AWARENESS

Large panoramic windows and the hydraulically height-adjustable cab provide excellent view without dislocating your neck. The ergonomically designed operator's workplace adjusts to your needs: A comfortable, orthopedically supportive, air-cushioned seat with lumbar support, arm and headrests is standard as well as the automatic air condition and the adjustable steering-column.



UP WHERE YOU BELONG

EXCELLENT OUTLOOK. SAFE JOB. STRESS-FREE WORK

CAB FEATURES

AT A GLANCE

- ▶ Large panoramic windows
- ▶ Bright and spacious interior
- ▶ Cab infinitely hydraulically height-adjustable; eye-level up to 5.60 m (18.4')
- ▶ Orthopedically supportive air cushioned comfort seat
- ▶ Adjustable steering column
- ▶ Automatically controlled air condition standard



HIGHER PRODUCTIVITY

LOWER OPERATING COSTS

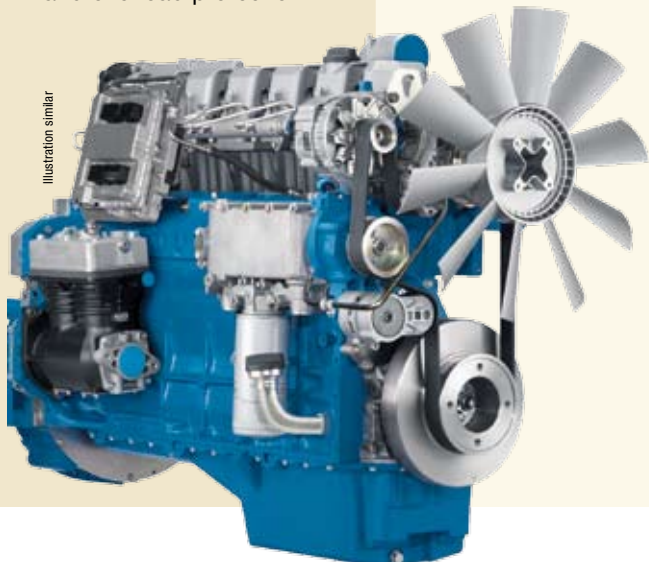
GREAT PERFORMANCE, EASY ON THE EARS

The heart of the MHL 340 is a high performing, turbocharged 6-cylinder Deutz engine rated at 128 kW @ 2.000 RPM. Thanks to the state-of-the-art load limit control, optimum performance is achieved at every speed range. Nevertheless, the powerhouse runs smoothly and quietly due to highly efficient sound deadening, low-noise pump, a large radiator and the low fan speed. A further plus for the environment is the full compliance with emission standards COM III/ Tier III. Operation in enclosed buildings is therefore feasible, causing lowest possible air pollution.

ENGINE FEATURES AT A GLANCE

- ▶ Solid performance of the 6-cylinder turbocharged Deutz Diesel engine – 128 kW @2.000 RPM
- ▶ Low noise, low emission
- ▶ Optimum performance utilization and overload protection

Illustration similar



FRESH IDEAS. CLEAN AIR. PERFECT TEMPERATURES A GREAT WORKING CLIMATE

ALWAYS NICE AND COOL

The separate cooling system maintains ideal temperatures at vital points of the machine, thus reducing wear to a minimum. The hydrostatically driven oil cooling fan with thermostatic speed control and the water-intercooler that is connected by a viscous-coupling achieve excellent cooling performance while operating silently. This enables operations in ambient temperatures up to 50°C.

MORE CLIMATE PROTECTION

Further "clean-air" options are available, especially for operations in (sorting) sheds; these include Zyklon pre-separators, filter mats and reversible fans for clean intake air. Or the particulate filter for the exhaust gases and, not least, the airtight cab with pressurization and air supply to protect the operator in pollution-prone conditions.

COOLING SYSTEM FEATURES AT A GLANCE

- ▶ Operating temperature up to 50 °C ambient air temperature
- ▶ Excellent cooling performance and low noise emission
- ▶ Hydrostatically powered oil-cooling fan
- ▶ Thermostatically controlled oil cooling fan speeds
- ▶ Fan drive via viscous coupling at water intercooler



NOTHING TO HIDE

For ease of maintenance, all components are accessible without difficulty via the side-mounted access and the maintenance platform. Radiator, intercooler and oil-cooler are within easy reach from the ground. Solid covers protect components from dirt.



NEW RECYCLING EFFICIENCY

CUSTOMER FOCUS

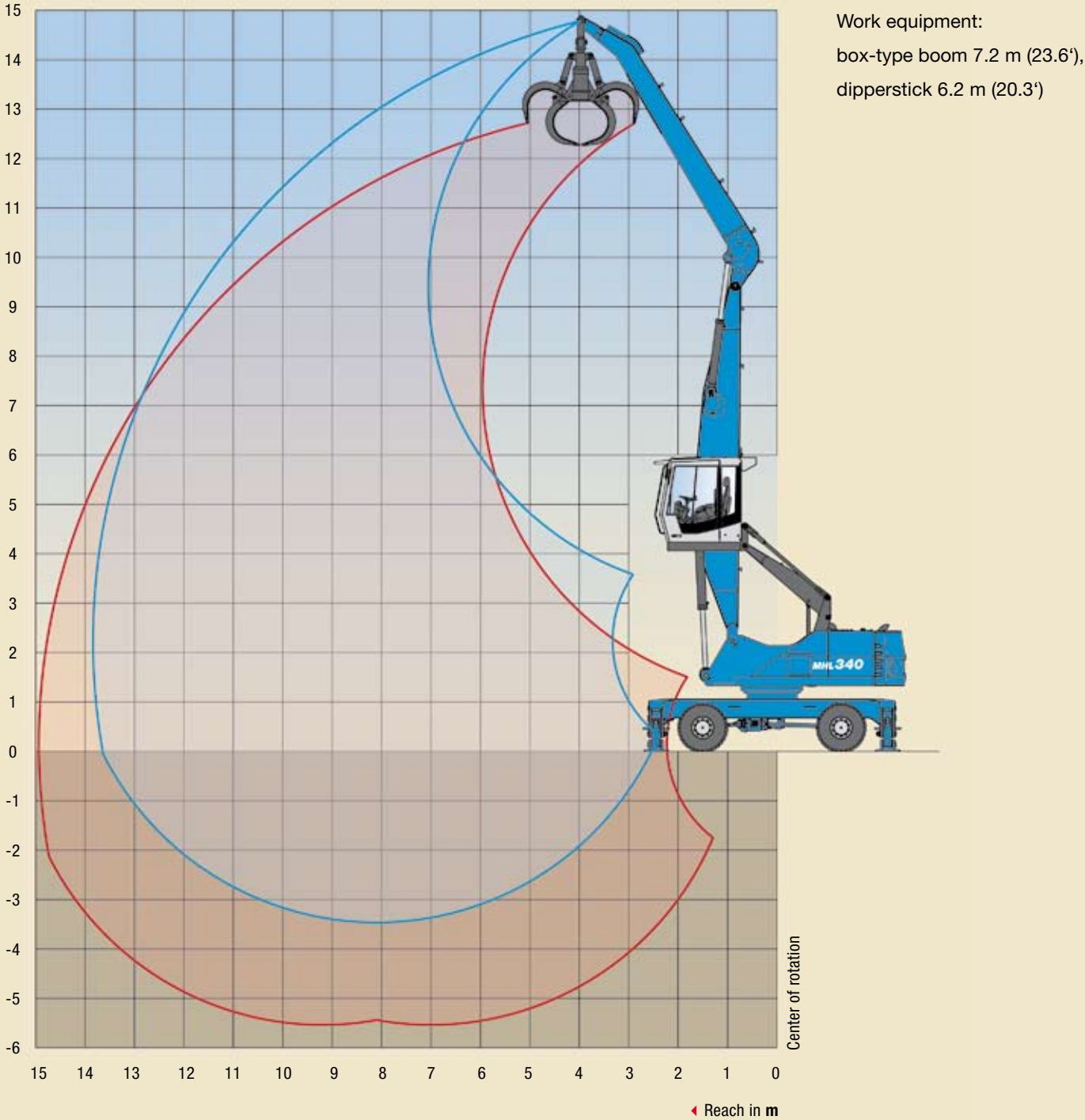


AT NO COMPROMISE



WORKING DIAGRAM

MHL 340 (SERIES D) REACH 13.7 m (45')



LIFTING CAPACITY

MHL 340 (SERIES D) REACH 13.7 m (45')

HEIGHT m	UNDERCARRIAGE STABILIZERS	REACHES m							
		3	4.5	6	7.5	9	10.5	12	13.5
13.5	non supported			(5.2*)					
	4-pt. supported			5.2* (5.2*)					
12	non supported				(5.3)	(3.5*)			
	4-pt. supported				5.4* (5.4*)	3.5* (3.5*)			
10.5	non supported				(5.4)	(3.9)	(2.9)		
	4-pt. supported				6.4* (6.4*)	5.3* (5.3*)	3.2* (3.2*)		
9	non supported				(5.4)	(3.9)	(2.9)		
	4-pt. supported				6.8* (6.8*)	5.9 (6.1*)	4.5 (4.9*)		
7.5	non supported				(5.3)	(3.8)	(2.9)	(2.2)	
	4-pt. supported				6.9* (6.9*)	5.8 (6.1*)	4.5 (5.5*)	3.5 (3.8*)	
6	non supported			(7.4)	(5.1)	(3.7)	(2.8)	(2.2)	
	4-pt. supported			8.6* (8.6*)	7.3* (7.3*)	5.7 (6.3*)	4.4 (5.4)	3.5 (4.3)	
4.5	non supported			(6.9)	(4.8)	(3.5)	(2.7)	(2.1)	(1.7)
	4-pt. supported			9.4* (9.4*)	7.4* (7.7*)	5.5 (6.5*)	4.3 (5.3)	3.4 (4.3)	2.4* (2.4*)
3	non supported		(9.8)	(6.3)	(4.4)	(3.3)	(2.6)	(2.0)	(1.6)
	4-pt. supported		14.2* (14.2*)	10.1 (10.3*)	7.0 (8.1*)	5.3 (6.6*)	4.1 (5.2)	3.3 (4.2)	2.7 (3.1*)
1.5	non supported		(8.5)	(5.6)	(4.1)	(3.1)	(2.4)	(1.9)	(1.6)
	4-pt. supported		15.1 (15.6*)	9.4 (10.9*)	6.6 (8.4*)	5.0 (6.3)	4.0 (5.0)	3.2 (4.1)	2.7 (3.2*)
0	non supported	(3.1*)	(7.6*)	(5.1)	(3.8)	(2.9)	(2.3)	(1.9)	(1.6)
	4-pt. supported	3.1* (3.1*)	7.6* (7.6*)	8.8 (10.8*)	6.3 (8.1)	4.8 (6.1)	3.9 (4.9)	3.2 (4.0)	2.7 (2.8*)
-1.5	non supported		(6.7*)	(4.9)	(3.6)	(2.8)	(2.2)	(1.9)	
	4-pt. supported		6.7* (6.7*)	8.5 (10.0*)	6.1 (7.8*)	4.7 (6.0)	3.8 (4.8)	3.1 (3.8*)	
-3	non supported			(4.8)	(3.5)	(2.7)			
	4-pt. supported			8.4* (8.4*)	6.0 (6.7*)	4.6 (5.3*)			

Capacity values are stated in metric tons (t) or lbs. The pump pressure is 355 bar (5148 psi). The values, in accordance with ISO 10567, amount to 75 % of the static tipping load or 87 % of the hydraulic lifting force (marked *). They apply to slewing operations through 360° on a firm and level surface. Values in brackets apply to the longitudinal direction of the undercarriage. "Non-supported" values only apply when the load is hoisted above the front or rear axle. The weight of the attached hoisting equipment (grab, magnet, load hook) must be deducted from the capacity values. If the TEREX Fuchs quick-change system is mounted on the boom, capacity is reduced by 300 kg (661 lbs). In accordance with EC guidelines, hose-rupture safety valves on the lift cylinders and an overload warning device are required for crane operations.

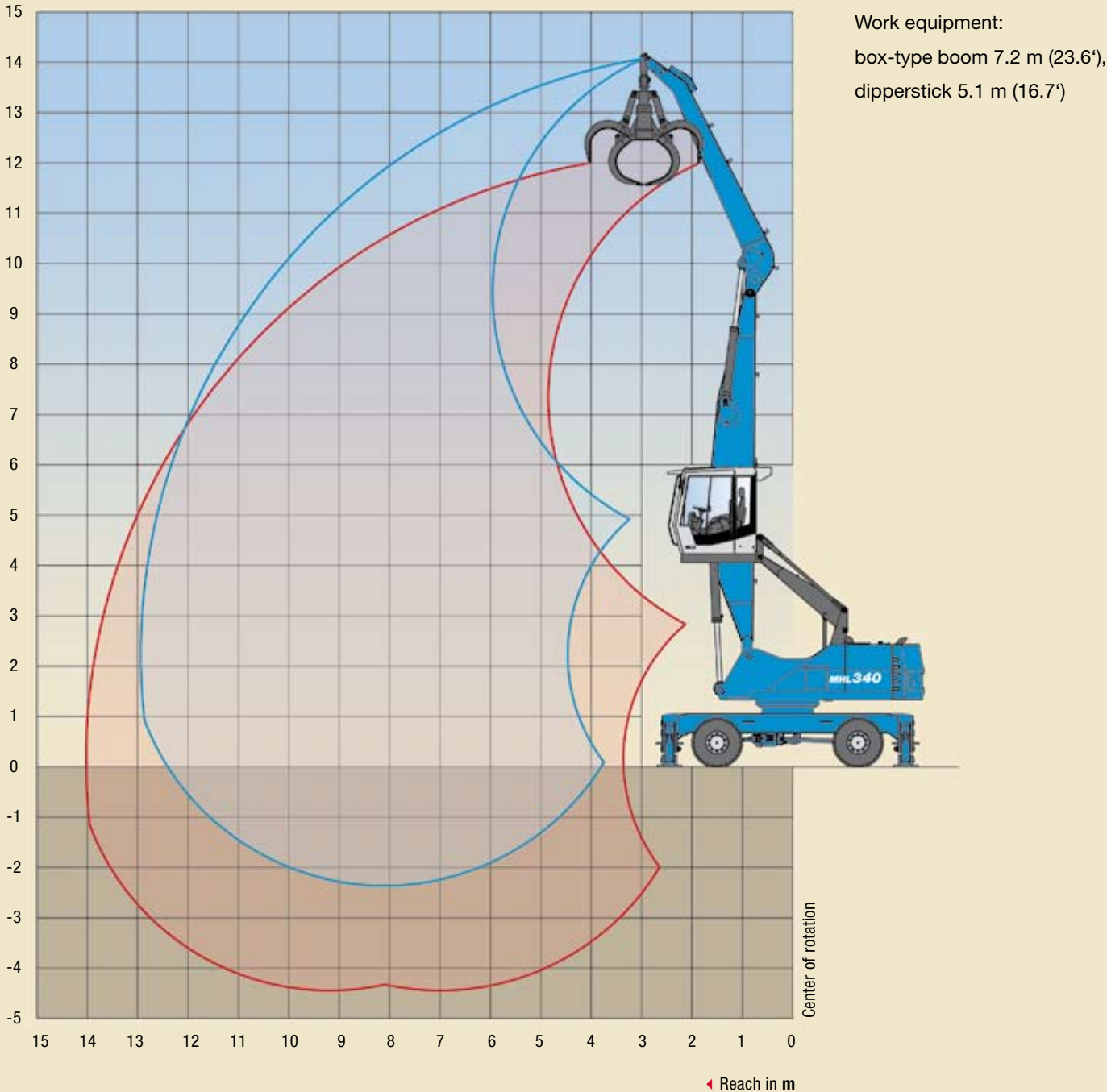
RECOMMENDED ATTACHMENTS

Loading system 13.7 m (45')

LIFT HOOKS	10 t
TEREX Fuchs CACTUS GRABS 0.4 m³	Open or half-closed shells
TEREX Fuchs CACTUS GRABS 0.6 m³	Open or half-closed shells
TEREX Fuchs MAGNET PLATE MP 1350	dia. = 1350 mm with magnet system 17 kW
CLAMSHELL GRAB 0.65 m³	Density of bulk material up to 1.400 kg/m³
CLAMSHELL GRAB 1.0 m³	Density of bulk material up to 800 kg/m³

WORKING DIAGRAM

MHL 340 (SERIES D) REACH 12.6 m (41.4')



LIFTING CAPACITY

MHL 340 (SERIES D) REACH 12.6 m (41.4')

HÖHE m	UNTERWAGEN ABSTÜTZUNG	AUSLADUNG m					
		4.5	6	7.5	9	10.5	12
13.5	non supported	(7.2*)					
	4-pt. supported	7.2* (7.2*)					
12	non supported		(7.3)	(4.9)			
	4-pt. supported		7.7* (7.7*)	5.3* (5.3*)			
10.5	non supported		(7.5)	(5.1)	(3.7)		
	4-pt. supported		8.8* (8.8*)	7.6* (7.6*)	5.4* (5.4*)		
9	non supported		(7.5)	(5.2)	(3.8)	(2.8)	
	4-pt. supported		8.8* (8.8*)	7.5* (7.5*)	5.7 (6.6*)	4.4 (4.4*)	
7.5	non supported		(7.3)	(5.1)	(3.7)	(2.8)	
	4-pt. supported		9.0* (9.0*)	7.6* (7.6*)	5.7 (6.6*)	4.4 (5.4)	
6	non supported		(7.0)	(4.9)	(3.6)	(2.8)	(2.2)
	4-pt. supported		9.6* (9.6*)	7.5 (7.9*)	5.6 (6.7)	4.3 (5.4)	3.5 (4.3*)
4.5	non supported	(10.3)	(6.5)	(4.6)	(3.5)	(2.7)	(2.1)
	4-pt. supported	14.0* (14.0*)	10.4* (10.4*)	7.2 (8.3*)	5.4 (6.7)	4.2 (5.3)	3.4 (4.3)
3	non supported	(9.0)	(5.9)	(4.3)	(3.3)	(2.6)	(2.1)
	4-pt. supported	15.7* (15.7*)	9.7 (11.0*)	6.9 (8.6*)	5.2 (6.5)	4.1 (5.2)	3.4 (4.2)
1.5	non supported	(6.1*)	(5.5)	(4.0)	(3.1)	(2.5)	(2.0)
	4-pt. supported	6.1* (6.1*)	9.2* (11.2*)	6.6 (8.4)	5.0 (6.3)	4.0 (5.1)	3.3 (4.2)
0	non supported	(5.3*)	(5.2)	(3.8)	(3.0)	(2.4)	(2.0)
	4-pt. supported	5.3* (5.3*)	8.8 (10.6*)	6.3 (8.1*)	4.9 (6.2)	3.9 (4.9)	3.3 (3.9*)
-1.5	non supported		(5.0)	(3.7)	(2.9)	(2.4)	
	4-pt. supported		8.7 (9.1*)	6.2 (7.3*)	4.8 (5.8*)	3.9 (4.5*)	

Capacity values are stated in metric tons (t) or lbs. The pump pressure is 355 bar (5148 psi). The values, in accordance with ISO 10567, amount to 75 % of the static tipping load or 87 % of the hydraulic lifting force (marked *). They apply to slewing operations through 360° on a firm and level surface. Values in brackets apply to the longitudinal direction of the undercarriage. "Non-supported" values only apply when the load is hoisted above the front or rear axle. The weight of the attached hoisting equipment (grab, magnet, load hook) must be deducted from the capacity values. If the TEREX Fuchs quick-change system is mounted on the boom, capacity is reduced by 300 kg (661 lbs). In accordance with EC guidelines, hose-rupture safety valves on the lift cylinders and an overload warning device are required for crane operations.

RECOMMENDED ATTACHMENTS

Loading system 12.6 m (41.4')

LIFT HOOKS	10 t
TEREX Fuchs CACTUS GRABS 0.6 m³	Open or half-closed shells
TEREX Fuchs CACTUS GRABS 0.8 m³	Open or half-closed shells
TEREX Fuchs MAGNET PLATE MP 1250	dia. = 1250 mm with magnet system 13 kW
CLAMSHELL GRAB 1.0 m³	Density of bulk material up to 1.400 kg/m³
CLAMSHELL GRAB 1.4 m³	Density of bulk material up to 800 kg/m³

TECHNICAL DATA

MHL 340 (SERIES D)

OPERATING WEIGHT

27,5 t - 29 t (60,627 lbs - 63,934 lbs)

DIESEL ENGINE

MANUFACTURER AND MODEL	Deutz TCD 2012 L06 2V
DESIGN	6 Cylinder Inline
ENGINE CONTROL	EMR III
TYPE	4-stroke diesel engine, direct common-rail fuel-injection, turbocharger with intercooling
ENGINE OUTPUT	128 kW (171 HP)
NOMINAL SPEED	2000 min ⁻¹
DISPLACEMENT	6,0 l (1.6 US GAL)
COOLING SYSTEM	Liquid intercooling with temperature controlled fan speed
EMISSION STANDARDS	COM III and EPA Tier III
AIR FILTER DESIGN	Two-stage filter with safety valve
FUEL CAPACITY (USABLE)	370 l (98 US GAL)

ELECTRICAL SYSTEM

OPERATING VOLTAGE	24 V
BATTERIES	2 x 12 V / 100 Ah / 760 A (in accordance with EN)
LIGHTING SET	1 dipper-stick-mounted floodlight, 1 headlight mounted to upper carriage, 1 floodlight attached to cabin floor, rear side-marker and turn signal lamps
OPTION	Magnet plate 13 kW or 17 kW

TRAVEL DRIVE

	Hydrostatic drive through infinitely variable axial piston motor and directly mounted; travel brake valves, two-speed power shift gear, 4-wheel drive
TRAVEL SPEED 1ST GEAR	max 5 km/h (3.1 mph)
TRAVEL SPEED 2ND GEAR	max 20 km/h (12.4 mph)
GRADEABILITY	max 45%
TURNING RADIUS	8.2 m (26.9')

SWING SYSTEM

RING GEAR	Internally toothed ball ring gear (double row)
DRIVE	Three-stage planetary gear with integrated multi-disc brake
UPPER CARRIAGE SWING SPEED	Infinitely variable from 0 - 8 min ⁻¹
PIVOT BRAKE	Electrically operated

UNDERCARRIAGE

FRONT AXLE	Planetary drive axle with integrated drum brake, rigidly mounted max steering angle : 27°
REAR AXLE	Oscillating planetary drive rear axle with integrated drum brake and selectable oscillating axle lock
STABILIZERS	4-point-stabilizers
TIRES	Solid rubber, elastic tires 8-fold 10.00 - 20

BRAKE SYSTEM

SERVICE BRAKE	Hydraulically operated single circuit brake system acting on all four wheel pairs
PARKING BRAKE	Electrically operated disc brake at transmission, acting on both front and rear axle

HYDRAULIC SYSTEM

	LINDE mobile hydraulic system with load limit control and fuel conserving power demand control. Separate oil cooler, temperature controlled fan speed. Hydraulic oil filter: integrated in the oil tank; maintenance interval: 3.000 operating hrs. Central lubrication system
MAX PUMP CAPACITY	2 x 320 l/min
MAX OPERATING PRESSURE	325/ 355 bar (4714 - 5148 psi)
HYDRAULIC OIL TANK	354 l (94 US GAL)

OPERATOR CAB

	Elastically supported, infinitely variable hydraulically height-adjustable with max. eye level of 5.6 m (18.4'). Sound-deadened, heat-insulated panoramic windows for optimum all-around view. Windshield with pull-down sunblind that slides under cab roof, sliding window in cab door. Steering column, height and tilt adjustable
HEATING	Infinitely variable hot water heating with 3-speed fan, 4 adjustable defroster nozzles.
OPERATOR'S SEAT	Air-cushioned comfort-seat with integrated headrest, safety belt and lumbar support, seat-heating with integrated a/c function optional. Seat position, seat inclination and seat cushion multi-adjustable in line with position of armrests and pilot control units, allowing fatigue-free operation.
MONITORING	Ergonomic instrument layout, glare-free. Function monitoring; warning and storage of deviating operating conditions, e.g. filter pressure w. warning indicator and shutdown of pilot controls, warning indicator resp. shutdown of pilot controls when exceeding hydraulic oil temperature limits.
AIR CONDITION	Automatic air condition
SOUND POWER LEVEL	(guaranteed) in accordance with guideline 2000/14 EG. L _{W(A)} = 101 dB(A)

SAFETY INSTALLATIONS

	For crane operations in accordance with EN 474-5.
	Cab protection by close proximity range limiter

OFFICIAL HOMOLOGATION

	Certification according to CE-regulations
--	---



EQUIPMENT

MHL 340 (SERIES D)

ENGINE	SERIES	OPTION
Turbocharger	•	
Intercooling	•	
Direct electronic fuel injection/common Rail	•	
Automatic idle	•	
Engine pre-heating		•
Interface for engine diagnosis	•	
Fan drive temperature controlled	•	

UNDERCARRIAGE	SERIES	OPTION
2-speed power-shift transmission	•	
4-point-stabilizers	•	
4-point stabilizers individually controllable		•
Stabilizer (outrigger) cylinders with integrated two-way check valves	•	
All-wheel drive	•	
Piston rod protection on stabilizer cylinder	•	
Stabilizer (outrigger) plate 500 x 350	•	
Rear axle oscillating lock	•	
Special paint		•
Drum brakes	•	
Tool box	•	

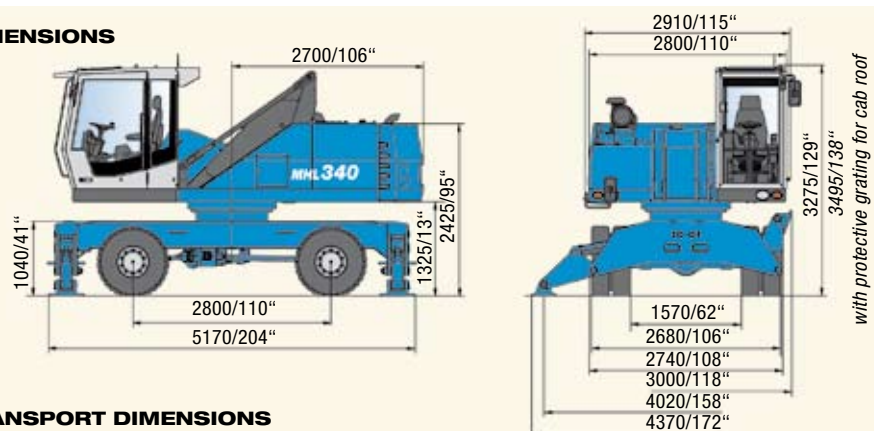
UPPER CARRIAGE	SERIES	OPTION
Electrical refueling pump		•
Lighting protection		•
Maintenance hood, actuated by gas spring, w. mechanical locking device	•	
Lockable cleaning access openings on radiator	•	
Separate radiator system for ambient temperatures up to 50°C	•	
Separate oil cooler w. temperature controlled fan drive	•	
Automatic central lubrication system	•	
Special paint		•
Quick-drain valve on fuel tank (delivered in tool box)	•	
Quick-drain valve on hydraulic oil tank	•	
Quick-drain valve on radiator	•	
Quick-drain valve on engine-oil pan	•	
Reversible fan for radiator and hydr. oil cooler		•

CAB	SERIES	OPTION
Lift-up skylight in cabin roof	•	
Air cushioned operator's seat with headrest, safety belt and lumbar-support	•	
FOPS-protective grating		•
Front/roof protective grating		•
Hinged front windshield	•	
Front-windows break-resistant (LEXAN)		•
Bulletproof glass, front and top		•
Cab system, height adjustable	•	
Air condition	•	
Steering column, height and tilt adjustable	•	
Multi functional display	•	
Fire extinguisher, dry powder		•
Preparation for radio		•
Cassette radio		•
Radio and CD Player		•
Rotating beacon		•
Sliding window in cab door	•	
Safety glass	•	
Seat heating with integrated a/c function		•
Engine independent heating		•
Windscreen washer system	•	

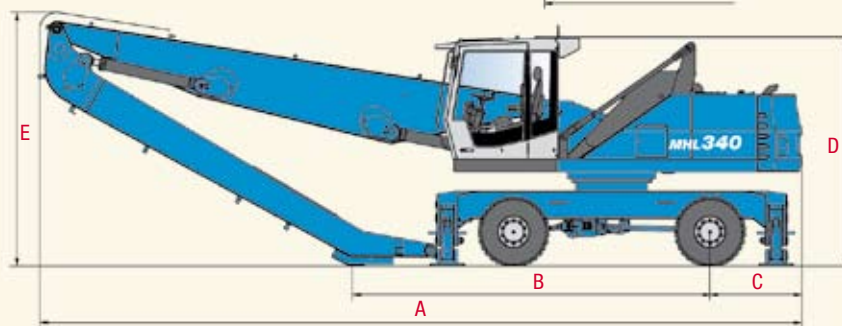
EQUIPMENT	SERIES	OPTION
Working floodlights on cab floor	•	
Working floodlights on upper carriage	•	
Floodlight, dipperstick mounted	•	
Hydraulic oil preheating		•
Close proximity range limiter for dipperstick	•	
Coolant and hydraulic oil level monitoring system	•	
Break protection for lift cylinder		•
Pipe break protection for stick cylinder		•
Dipperstick shock protection	•	
Lubrication of grab suspension by central lubrication system	•	
Overload protection/shutdown		•
XENON-floodlight on dipperstick		•
XENON-floodlight , upper carriage		•
XENON-floodlight on cab roof		•
Quick-connect coupling on dipperstick	•	



DIMENSIONS



TRANSPORT DIMENSIONS



DIMENSIONS	REACH 12.6 m (41.4')	REACH 13.7 m (45')
A	11,000 mm (433")	11,000 mm (433")
B	5,900 mm (232")	5,000 mm (197")
C	1,300 mm (51")	1,300 mm (51")
D	3,275 mm (129") / *3,495 mm (*138")	3,275 mm (129") / *3,495 mm (*138")
E	3,250 mm (128")	3,600 mm (142")

* with protective grating for cab roof

DISTRIBUTOR