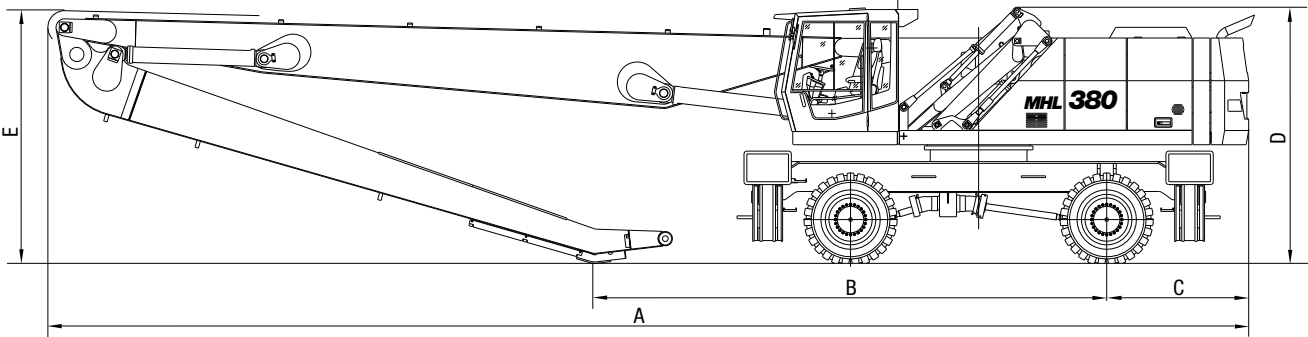


LOADING MACHINES

MHL 380

Transport dimensions on flat-bed trailer



Transport Dimensions				
Dimensions	Reach (work equipment)			
	18.5 m (60'9") straight	21.0 m (68'9") straight	21.0 m (68'9") monobloc	
A	15,005 mm (591")	16,880 mm (665")	16,670 mm (656")	
B	6,085 mm (240")	7,195 mm (283")	6,555 mm (258")	
C	1,995 mm (79")	1,995 mm (79")	1,995 mm (79")	
D	3,600 mm (142")	3,600 mm (142")	3,600 mm (142")	
E	3,165 mm (125")	3,555 mm (140")	3,730 mm (147")	

Grabs
▶ 1.0 m³ (1.3 yd³) - 1.4 m³ (1.8 yd³) cactus grab (optional) with cast central case and enclosed swing drive, grab jaws with wear-resistant grab liners and tips.
▶ Clamshell bucket (optional) according to job-site conditions.

Safety Equipments
▶ Required when machine is used for load hook operations in compliance with EN 474-5. Protection of cab ensured by work equipment operating range limit.

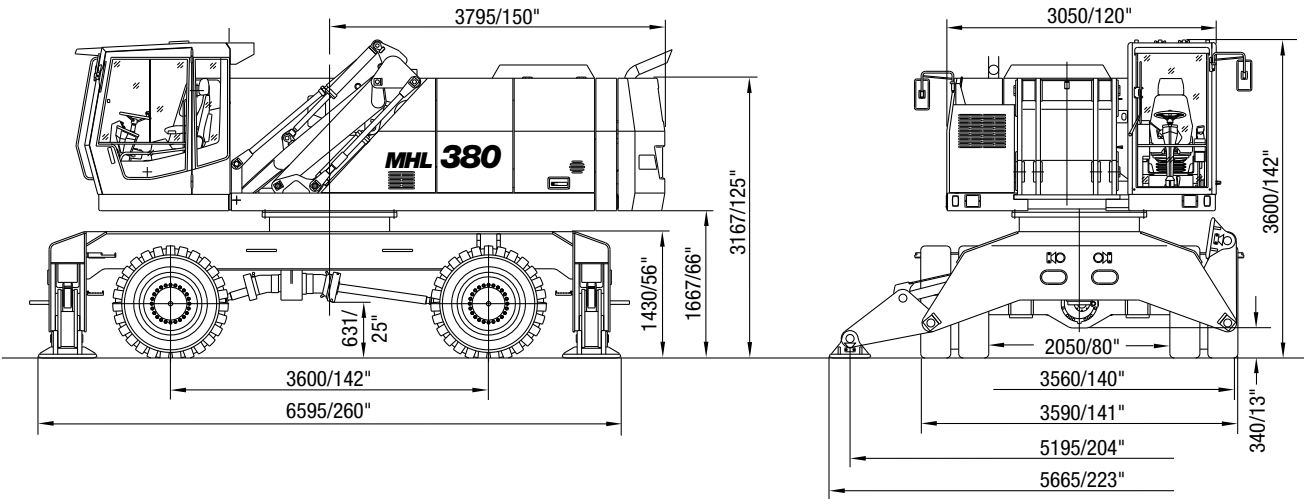
Cab
▶ Cab: ergonomically shaped driver's cab with functional design and excellent all-round visibility, infinitely variable hydraulically height-adjustable with max. eye level of 6.2 m (20'), independent horizontal advance of 2.2 m (7')
▶ Driver's seat: air-cushioned comfort seat with pneumatically adjustable lumbar support, safety belt and integrated headrest, seat heating available on request. Seat position, seat inclination and seat cushion multi-adjustable in line with position of armrests and pilot control units, allowing fatigue-free operations.
▶ Steering post: inclinable and height adjustable.
▶ Infinitely variable hotwater heating with 3-speed fan, 4 adjustable defroster nozzles.
▶ Air conditioning as standard.
▶ Up and over type front windshield with pull-down sunblind, lift-up skylight on cab roof.
▶ Option: cab with bullet-proofed glass, windshield screen, auxiliary heating, stereo cassette radio.
▶ Acoustic power level (guaranteed) L _{WA} = 106 dB(A).

Offical Homologation
▶ Certification according to CE-regulations.



MHL 380

Loading Machines



Diesel Engine	
Manufacturer and type	Deutz-BF6M 1015 C
Design	6-cylinder turbocharged and charge air cooler.
Engine output	248 kW (381 HP)
Nominal speed	1,800 rpm
Displacement	12 l (732 cb in)
Cooling system	Liquid cooling, thermostatically controlled and charge air cooling.
Emission standards	COM II and TIER II
Air filter design	Two-stage filter with safety valve.
Fuel tank	900 l (238 US gal)

Electrical System	
Operating voltage	24 V
Batteries	2 x 12 V / 100 Ah / 950 A (accor. to EN)
Ligthing set	2 uppercarriage-mounted headlamps, 2 boom-mounted and 2 dipperstick-mounted working floodlight, rear side-marker and turn signal lamps.
Option	Magnet system 30 kW

Travel Drive	
▶ Hydrostatic drive through two infinitely variable axial piston motors and directly mounted travel brake valves, 4-wheel drive.	
Travel speed / Gradeability	0 - 11 km/h (0 - 6.8 mph) / max. 38 %
Turning radius	9.9 m (32')

Operating Weights	
Basic machine including work attachment, 4-point stabilizers and 1.0 m³ (1.3 yd³) cactus grab	
Reach 18.5 m (60'9")	straight boom 65,000 kg (143,300 lbs)
Reach 21.0 m (68'9")	straight boom 65,500 kg (143,300 lbs)
Reach 21.0 m (68'9")	monobloc boom 66,000 kg (145,500 lbs)

Swing System	
Ring gear	Internally toothed ring gear.
Drive	Three-stage planetary gear with integrated multi-disc brake.
Upper carriage swing speed	0 - 6 rpm

Superstructure	
Front axle: Rigid mounted steering axle with integrated drum brake, max. steering angle 30°.	
Rear axle: Oscillating rear axle with oscillating axle lock and integrated drum brake.	
Stabilizers	4-point-stabilizers
Tires	Solid rubber, elastic tires 8-fold 14.00 -24

Brake System	
Service brake	Hydraulic single-circuit braking system acting on all four wheel pairs.
Parking brake	Hydraulic disc brake on gear box acting on both front and rear axle.

Hydraulic System	
▶ Single circuit hydraulic system with load sensing function and power management control for optimal use of the available engine output.	
▶ Seperate oil cooler with large cooling surface, temperature controlled fan speed.	
▶ Hydraulic oil filter integrated in the oil tank.	
▶ Central lubricating system as standard.	
▶ Regeneration function for lift cylinders: saves energy and increases the operating speed.	
Max. pump capacity	936 l (247 US gal/min) at 1,800 rpm
Max. operating pressure	360 bar (5,221 psi)
Hydraulic oil tank	780 l (206 US gal)



TEREX Fuchs

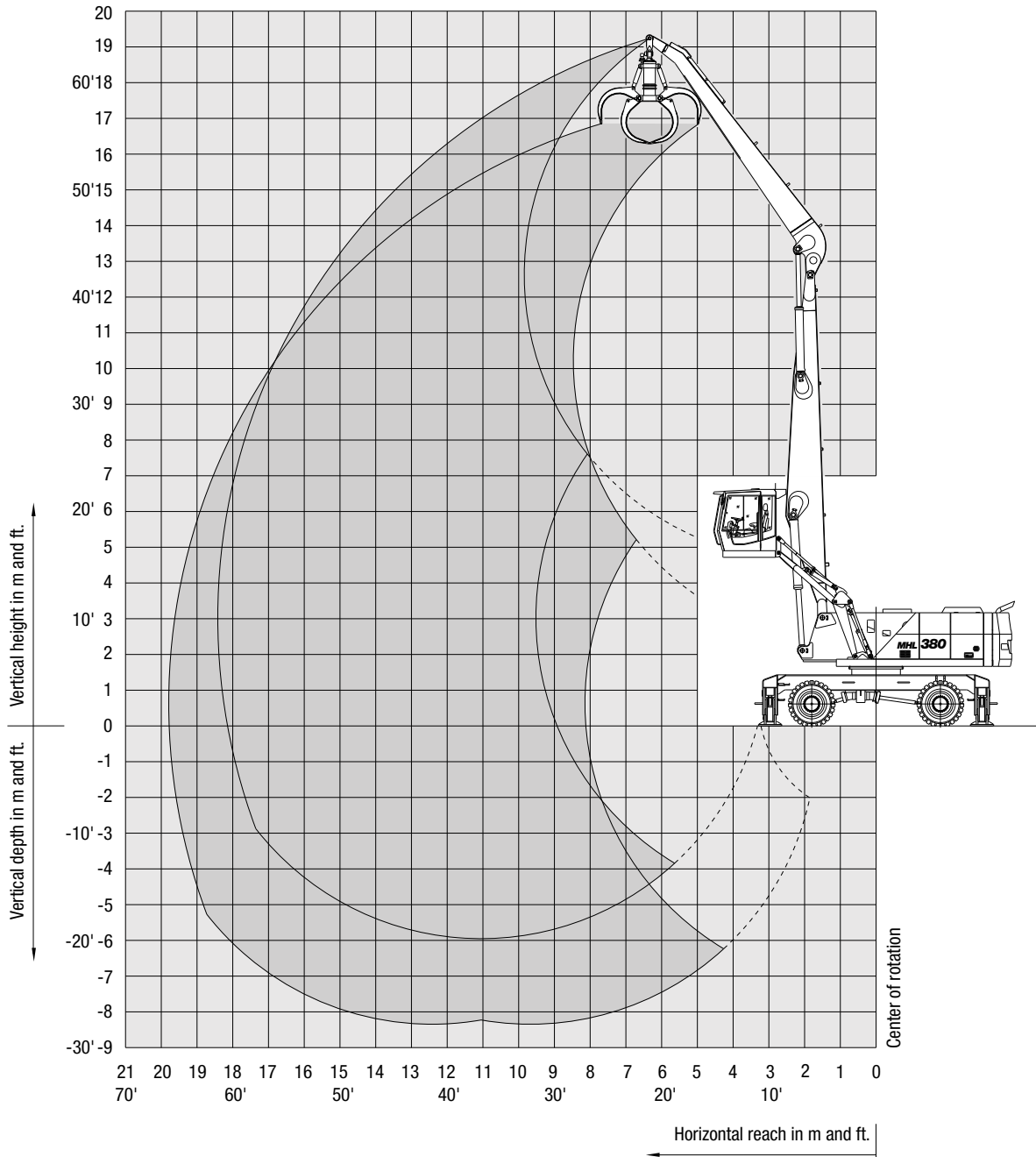
Industriestraße 3
D-76669 Bad Schönborn
Germany

TEL ++49 (0) 72 53 / 84-0
FAX ++49 (0) 72 53 / 8 41 11
EMAIL info@fuchs-terex.de
WEB fuchs-terex.de

Working Diagram

MHL 380 reach 18.5 m (60'9")

► Work equipment: box-type boom straight 9.6 m (31'5"), dipperstick 8.0 m (26'3").



Lifting Capacity

MHL 380 reach 18.5 m (60'9")

► Work equipment: box-type boom straight 9.6 m (31'5"), dipperstick 8.0 m (26'3").

Height in m	Undercarriage stabilizers	Reach in m								
		6	7.5	9	10.5	12	13.5	15	16.5	18
18	non-supported			(9.3*)						
	4-pt. supported			9.3* (9.3*)						
16.5	non-supported				(10.0*)					
	4-pt. supported				10.0* (10.0*)					
15	non-supported				(11.6)	(9.3)				
	4-pt. supported				12.1* (12.1*)	10.0* (10.0*)				
13.5	non-supported				(11.8)	(9.4)	(7.7)			
	4-pt. supported				12.0* (12.0*)	11.2* (11.2*)	9.5* (9.5*)			
12	non-supported				(11.8)	(9.5)	(7.7)	(6.4)		
	4-pt. supported				11.9* (11.9*)	11.1* (11.1*)	10.5* (10.5*)	8.5* (8.5*)		
10.5	non-supported				(11.7)	(9.4)	(7.7)	(6.4)	(5.3)	
	4-pt. supported				12.1* (12.1*)	11.3* (11.3*)	10.5* (10.5*)	9.8* (9.8*)	6.5* (6.5*)	
9	non-supported				(11.5)	(9.3)	(7.6)	(6.3)	(5.3)	
	4-pt. supported				12.6* (12.6*)	11.6* (11.6*)	10.7* (10.7*)	9.6 (9.9*)	8.2 (8.7*)	
7.5	non-supported			(14.2)	(11.2)	(9.0)	(7.5)	(6.2)	(5.3)	
	4-pt. supported			14.7* (14.7*)	13.2* (13.2*)	11.9* (11.9*)	11.0* (10.9*)	9.5 (10.0*)	8.2 (9.3*)	
6	non-supported		(18.1)	(13.6)	(10.8)	(8.8)	(7.3)	(6.1)	(5.2)	(4.4)
	4-pt. supported		18.6* (18.6*)	15.9* (15.9*)	14.0* (14.0*)	12.4* (12.4*)	11.1* (11.2*)	9.4 (10.2*)	8.1 (9.3*)	6.5* (6.5*)
4.5	non-supported	(23.6)	(16.9)	(12.9)	(10.3)	(8.4)	(7.0)	(6.0)	(5.1)	(4.4)
	4-pt. supported	27.1* (27.1*)	21.1* (21.1*)	17.4* (17.4*)	14.8* (14.8*)	13.0* (13.0*)	10.8 (11.5*)	9.2 (10.3*)	8.0 (9.4*)	7.0 (7.6*)
3	non-supported	(21.4)	(15.7)	(12.2)	(9.8)	(8.1)	(6.8)	(5.8)	(5.0)	(4.3)
	4-pt. supported	31.1* (31.1*)	23.2* (23.2*)	18.5* (18.5*)	15.3 (15.5*)	12.6 (13.5*)	10.6 (11.8*)	9.1 (10.5*)	7.9 (9.3*)	6.8 (8.1*)
1.5	non-supported	(14.6*)	(14.6)	(11.5)	(9.3)	(7.8)	(6.6)	(5.6)	(4.9)	(4.3)
	4-pt. supported	14.6* (14.6*)	24.2 (24.4*)	18.5 (19.3*)	14.8 (16.1*)	12.2 (13.7*)	10.4 (12.0*)	8.9 (10.5*)	7.8 (9.2*)	6.8 (8.0*)
0	non-supported	(11.3*)	(13.8)	(10.9)	(9.0)	(7.5)	(6.4)	(5.5)	(4.8)	(4.2)
	4-pt. supported	11.3* (11.3*)	23.3 (24.8*)	17.9 (19.7*)	14.4 (16.2*)	11.9 (13.8*)	10.1 (11.9*)	8.8 (10.4*)	7.7 (9.0*)	6.8 (7.5*)
-1.5	non-supported	(11.2*)	(13.4)	(10.6)	(8.7)	(7.3)	(6.2)	(5.4)	(4.7)	
	4-pt. supported	11.2* (11.2*)	19.8* (19.8*)	17.4 (19.3*)	14.1 (16.1*)	11.7 (13.6*)	10.0 (11.6*)	8.7 (10.1*)	7.6 (8.6*)	
-3	non-supported	(11.9*)	(13.2)	(10.4)	(8.5)	(7.2)	(6.1)	(5.3)	(4.7)	
	4-pt. supported	11.9* (11.9*)	18.7* (18.7*)	17.2 (18.3*)	13.9 (15.4*)	11.6 (13.0*)	9.9 (11.1*)	8.6 (9.4*)	7.6* (7.7*)	
-4.5	non-supported		(13.1)	(10.3)	(8.4)	(7.1)	(6.1)	(5.3)		
	4-pt. supported		19.0* (19.0*)	16.8* (16.8*)	13.8 (14.1*)	11.5 (11.8*)	9.8 (10.1*)	8.2* (8.2*)		

Height in ft.	Undercarriage stabilizers	20	25	30	35	40	45	50	55	60
60	non-supported			(20,500*)						
	4-pt. supported			20,500* (20,500*)						
55	non-supported				(22,040*)					
	4-pt. supported				22,040* (22,040*)					
50	non-supported				(25,570)	(20,500)				
	4-pt. supported				26,670* (26,670*)	22,040* (22,040*)				
45	non-supported				(26,010)	(20,720)	(16,970)			
	4-pt. supported				26,450* (26,450*)	24,690* (24,690*)	20,940* (20,940*)			
40	non-supported				(26,010)	(20,940)	(16,970)	(14,100)		
	4-pt. supported				26,230* (26,230*)	24,470* (24,470*)	23,140* (23,140*)	18,730* (18,730*)		
35	non-supported				(25,790)	(20,720)	(16,970)	(14,100)	(11,680)	
	4-pt. supported				26,670* (26,670*)	24,910* (24,910*)	23,140* (23,140*)	21,600* (21,600*)	14,330* (14,330*)	
30	non-supported				(25,350)	(20,500)	(16,750)	(13,880)	(11,680)	
	4-pt. supported				27,770* (27,770*)	25,570* (25,570*)	23,580 * (23,580*)	21,160 (21,820*)	18,070 (19,180*)	
25	non-supported			(31,300)	(24,690)	(19,840)	(16,530)	(13,660)	(11,680)	
	4-pt. supported			32,400* (32,400*)	29,100* (29,100*)	26,230* (26,230*)	24,250* (24,030*)	20,940 (22,040*)	18,070 (20,500*)	
20	non-supported		(39,900)	(29,980)	(23,800)	(19,400)	(16,090)	(13,440)	(11,460)	(9,700)
	4-pt. supported		41,000* (41,000*)	35,050* (35,050*)	30,860* (30,860*)	27,330* (27,330*)	24,470* (24,690*)	20,720 (22,480*)	17,850 (20,500*)	14,330* (14,330*)
15	non-supported	(52,020)	(37,250)	(28,430)	(22,700)	(18,510)	(15,430)	(13,220)	(11,240)	(9,700)
	4-pt. supported	59,740* (59,740*)	46,510* (46,510*)	38,360* (38,360*)	32,620* (32,620*)	28,660* (28,660*)	23,800 (25,350*)	20,280 (22,700*)	17,630 (20,720*)	15,430 (16,750*)
10	non-supported	(47,170)	(34,610)	(26,690)	(21,600)	(17,850)	(14,990)	(12,780)	(11,020)	(9,470)
	4-pt. supported	68,560* (68,560*)	51,140* (51,140*)	40,780* (40,780*)	33,730 (34,170*)	27,770 (29,760*)	23,360 (26,010*)	20,060 (23,140*)	17,410 (20,500*)	14,990 (17,850*)
5	non-supported	(31,970*)	(32,180)	(25,350)	(20,500)	(17,190)	(14,550)	(12,340)	(10,800)	(9,470)
	4-pt. supported	32,180* (32,180*)	53,350 (53,790*)	40,780 (42,540*)	32,620 (35,490*)	26,890 (30,200*)	23,920 (26,450*)	19,620 (23,140*)	17,190 (20,280*)	14,990 (17,630*)
0	non-supported	(24,910*)	(30,420)	(24,030)	(19,840)	(16,530)	(14,100)	(12,120)	(10,580)	(9,250)
	4-pt. supported	24,910* (24,910*)	51,360 (54,670*)	39,460 (43,330*)	31,710 (35,710*)	26,230 (30,420*)	22,260 (26,230*)	19,400 (22,920*)	16,970 (19,840*)	14,990 (16,530*)
-5	non-supported	(24,690*)	(29,540)	(23,360)	(19,180)	(16,090)	(13,660)	(11,900)	(10,360)	
	4-pt. supported	24,690* (24,690*)	43,650* (43,650*)	38,360 (42,540*)	31,080 (35,490*)	25,790 (29,980*)	22,040 (25,570*)	19,180 (22,260*)	16,750 (18,950*)	
-10	non-supported	(26,230*)	(29,100)	(22,920)	(18,730)	(15,870)	(13,440)	(11,680)	(10,360)	
	4-pt. supported	26,230* (26,230*)	41,220* (41,220*)	37,910 (40,340*)	30,640 (33,950*)	25,570 (28,660*)	21,820 (24,470*)	18,950 (20,720*)	16,750* (16,970*)	
-15	non-supported		(28,880)	(22,700)	(18,510)	(15,650)	(13,440)	(11,680)		
	4-pt. supported		41,880* (41,880*)	37,030* (37,030*)	30,420 (31,080*)	25,350 (26,010*)	21,600 (22,260*)	18,070* (18,070*)		

Remarks

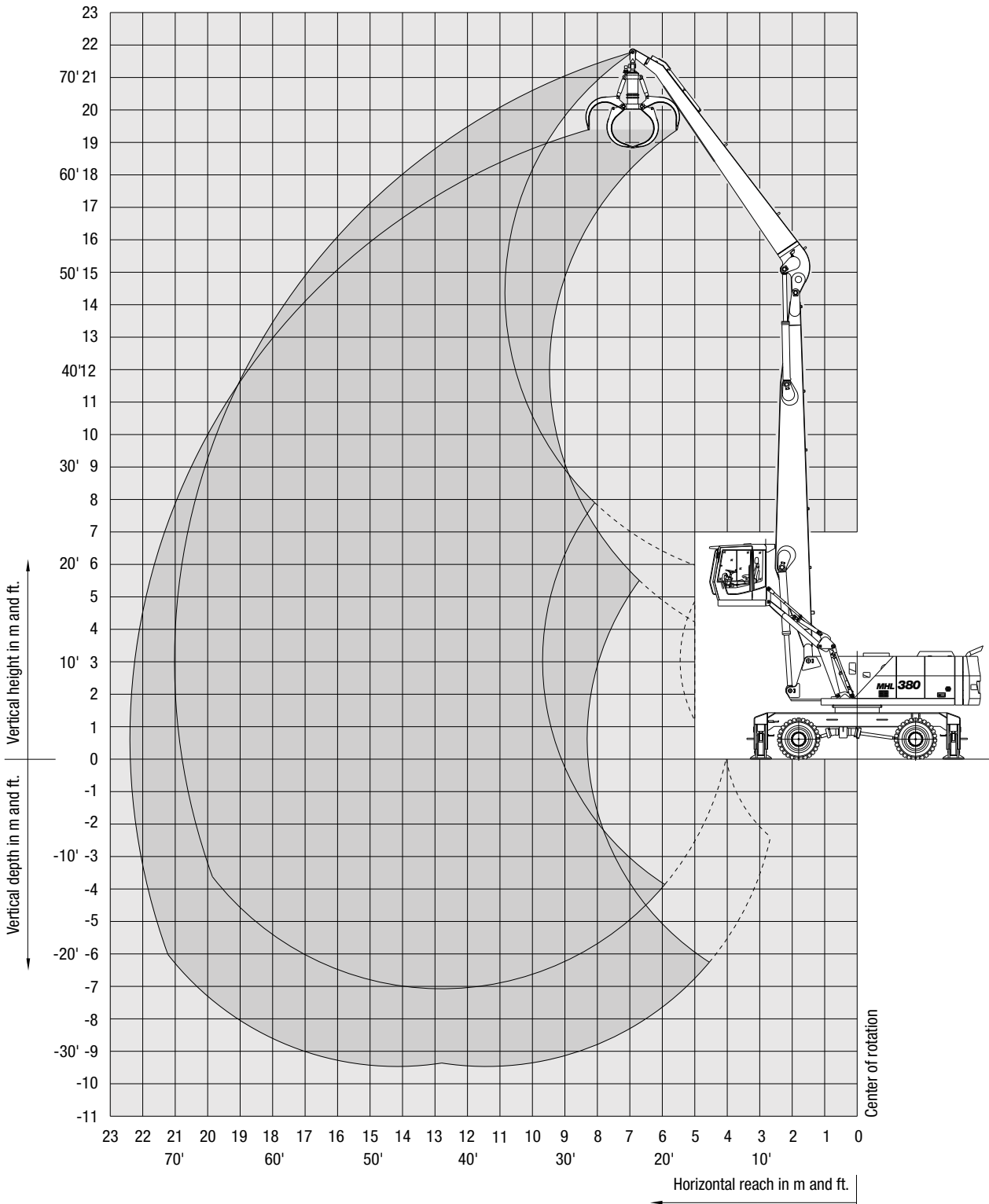
The values are stated in tons (t) or lbs. The pump pressure for this table is 360 bar (5,221 psi). The values amount to 75 % of the static tipping load or 87 % of the hydraulic lifting force (marked *), in accordance with ISO 10567. When the machine is standing on solid and level ground, these values apply to slewing operations through 360°. The values in brackets apply in the lengthwise direction of the undercarriage. The values specified “non-

supported” only apply when the load is hoisted above the front or rear axle. The weight of the attached load hoisting implement (grab, magnet, load hook) must be deducted from the carrying capacity values. If the TEREX Fuchs quick-attach system is mounted on the boom, carrying capacity values are reduced by 800 kg (1,763 lbs). In accordance with EC guidelines, hose-rupture safety valves on the lift cylinders and an overload warning device are required for crane operations.

Working Diagram

MHL 380 reach 21.0 m (68'9")

► Work equipment: box-type boom straight 11.35 m (37'2"), dipperstick 8.95 m (29'3").



Lifting Capacity

MHL 380 reach 21.0 m (68'9")

► Work equipment: box-type boom straight 11.35 m (37'2"), dipperstick 8.95 m (29'3").

Height in m	Undercarriage stabilizers	Reach in m									
		6	7.5	9	10.5	12	13.5	15	16.5	18	19.5
18	non-supported					(9.3*)	(7.0*)				
	4-pt. supported					9.3* (9.3*)	7.0* (7.0*)				
16.5	non-supported					(9.6)	(7.7)	6.3			
	4-pt. supported					10.2* (10.2*)	9.2* (9.2*)	6.9* (6.9*)			
15	non-supported					(9.6)	(7.8)	(6.4)	(5.3)		
	4-pt. supported					10.0* (10.0*)	9.3* (9.3*)	8.7* (8.7*)	6.3* (6.3*)		
13.5	non-supported					(9.6)	(7.9)	(6.5)	(5.3)		
	4-pt. supported					10.0* (10.0*)	9.3* (9.3*)	8.7* (8.7*)	8.1* (8.1*)		
12	non-supported					(9.6)	(7.8)	(6.4)	(5.4)	(4.5)	
	4-pt. supported					10.1* (10.1*)	9.4* (9.4*)	8.7* (8.7*)	8.1* (8.1*)	7.1* (7.1*)	
10.5	non-supported				(11.5)	(9.4)	(7.7)	(6.4)	(5.3)	(4.4)	(3.7)
	4-pt. supported				11.5* (11.5*)	10.4* (10.4*)	9.5* (9.5*)	8.8* (8.8*)	8.1 (8.2*)	7.0 (7.6*)	5.0* (5.0*)
9	non-supported				(11.4)	(9.1)	(7.5)	(6.2)	(5.2)	(4.4)	(3.7)
	4-pt. supported				12.0* (12.0*)	10.8* (10.8*)	9.8* (9.8*)	9.0* (9.0*)	8.1 (8.2*)	7.0 (7.6*)	6.0 (6.7*)
7.5	non-supported			(13.9)	(10.9)	(8.8)	(7.2)	(6.0)	(5.1)	(4.3)	(3.7)
	4-pt. supported			14.4* (14.4*)	12.6* (12.6*)	11.2* (11.2*)	10.0* (10.0*)	9.2* (9.2*)	8.0 (8.4*)	6.9 (7.7*)	6.0 (7.1*)
6	non-supported	(23.1*)	(17.4)	(13.1)	(10.3)	(8.4)	(6.9)	(5.8)	(4.9)	(4.2)	(3.6)
	4-pt. supported	23.1* (23.1*)	19.0* (19.0*)	15.7* (15.7*)	13.3* (13.3*)	11.6* (11.6*)	10.4* (10.4*)	9.1 (9.4*)	7.8 (8.5*)	6.8 (7.7*)	5.9 (7.0*)
4.5	non-supported	(21.8)	(15.8)	(12.2)	(9.7)	(8.0)	(6.6)	(5.6)	(4.8)	(4.1)	(3.5)
	4-pt. supported	28.0* (28.0*)	20.9* (20.9*)	16.8* (16.8*)	14.1* (14.1*)	12.1* (12.1*)	10.4 (10.6*)	8.9 (9.5*)	7.7 (8.6*)	6.7 (7.8*)	5.8 (7.0*)
3	non-supported	(11.0*)	(14.3)	(11.2)	(9.1)	(7.5)	(6.3)	(5.4)	(4.6)	(4.0)	(3.4)
	4-pt. supported	11.0* (11.0*)	22.5* (22.5*)	17.7* (17.7*)	14.7* (14.7*)	12.0 (12.6*)	10.1 (10.9*)	8.6 (9.7*)	7.5 (8.6*)	6.5 (7.7*)	5.8 (6.9*)
1.5	non-supported	(6.5*)	(13.1)	(10.4)	(8.5)	(7.1)	(6.0)	(5.1)	(4.4)	(3.9)	(3.4)
	4-pt. supported	6.5* (6.5*)	16.3* (16.3*)	17.3 (18.3*)	13.9 (15.0*)	12.0 (12.8*)	9.8 (11.0*)	8.4 (9.7*)	7.3 (8.6*)	6.4 (7.7*)	5.7 (6.8*)
0	non-supported	(6.1*)	(11.9)	(9.8)	(8.1)	(6.8)	(5.8)	(5.0)	(4.3)	(3.8)	(3.3)
	4-pt. supported	6.1* (6.1*)	11.9* (11.9*)	16.6 (18.4*)	13.4 (15.2*)	11.2 (12.8*)	9.5 (11.1*)	8.2 (9.6*)	7.2 (8.5*)	6.3 (7.5*)	5.6 (6.5*)
-1.5	non-supported	(6.7*)	(11.0*)	(9.4)	(7.7)	(6.5)	(5.6)	(4.8)	(4.2)	(3.7)	(3.3)
	4-pt. supported	6.7* (6.7*)	11.0* (11.0*)	16.2 (17.8*)	13.1 (14.8*)	10.9 (12.6*)	9.3 (10.8*)	8.0 (9.5*)	7.0 (8.3*)	6.2 (7.2*)	5.6 (6.2*)
-3	non-supported	(7.7*)	(11.1*)	(9.1)	(7.5)	(6.3)	(5.4)	(4.7)	(4.1)	(3.6)	(3.2)
	4-pt. supported	7.7* (7.7*)	11.1* (11.1*)	15.9 (16.9*)	12.8 (14.1*)	10.7 (12.1*)	9.1 (10.5*)	7.9 (9.1*)	7.0 (7.9*)	6.2 (6.8*)	5.6* (5.6*)
-4.5	non-supported		(11.6)	(9.1)	(7.4)	(6.2)	(5.3)	(4.6)	(4.1)	(3.6)	
	4-pt. supported		11.7* (11.7*)	15.5* (15.5*)	12.7 (13.2*)	10.6 (11.3*)	9.0 (9.8*)	7.8 (8.5*)	6.9 (7.2*)	6.1* (6.1*)	
-6	non-supported			(9.1)	(7.4)	(6.2)	(5.3)	(4.6)	(4.1)		
	4-pt. supported			13.6* (13.6*)	11.8* (11.8*)	10.1* (10.1*)	8.8* (8.8*)	7.6* (7.6*)	6.3* (6.3*)		

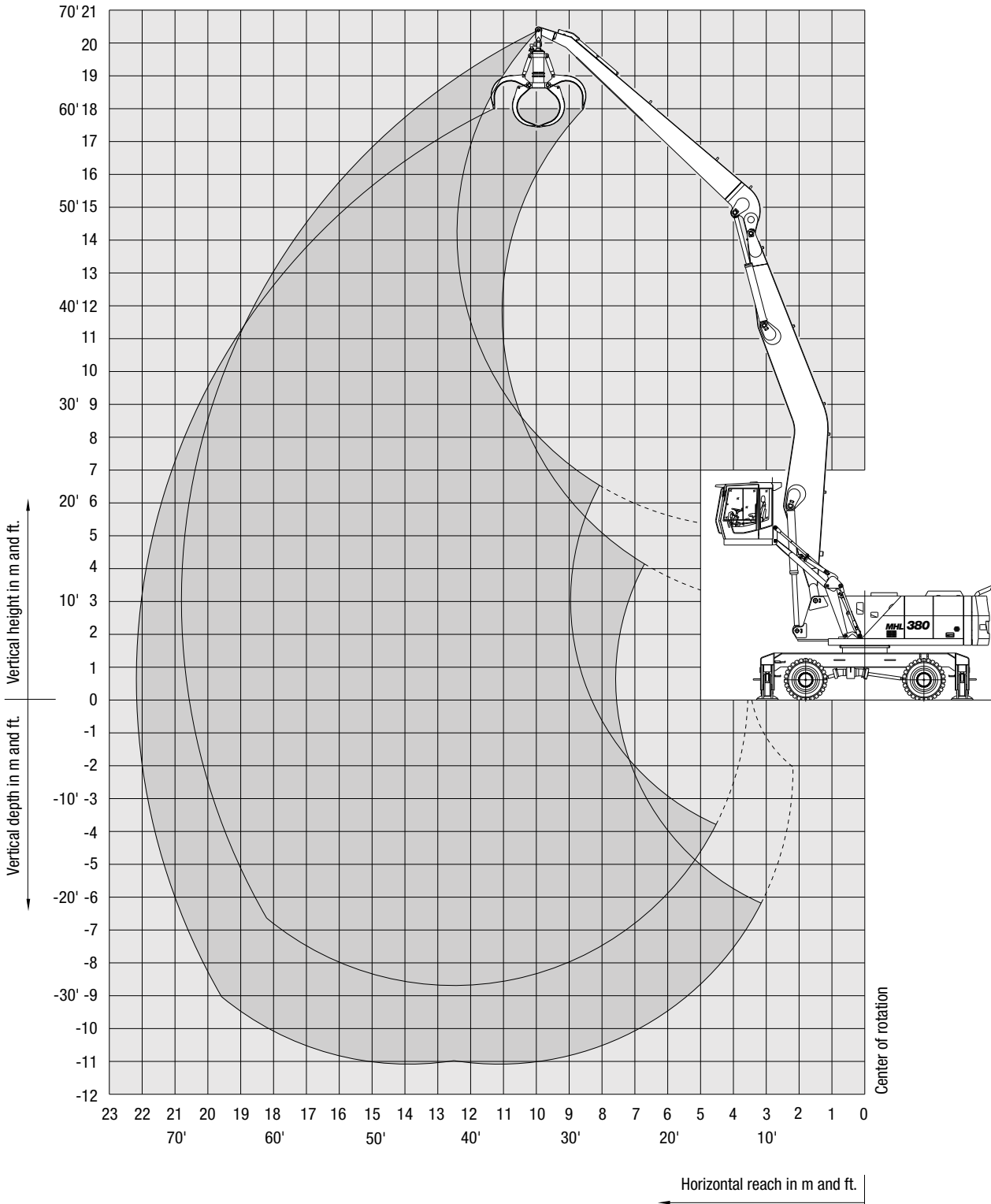
Height in ft.	Undercarriage stabilizers	Reach in ft.									
		20	25	30	35	40	45	50	55	60	65
60	non-supported					(20,500*)	(15,430*)				
	4-pt. supported					20,500* (20,500*)	15,430* (15,430*)				
55	non-supported					(21,160)	(16,970)	(13,880)			
	4-pt. supported					22,480* (22,480*)	20,280* (20,280)	15,210* (15,210*)			
50	non-supported					(21,160)	(17,190)	(14,100)	(11,680)		
	4-pt. supported					22,040* (22,040*)	20,500* (20,500*)	19,180* (19,180*)	13,000* (13,880*)		
45	non-supported					(21,160)	(17,410)	(14,330)	(11,680)		
	4-pt. supported					22,040* (22,040*)	20,500* (20,500*)	19,180* (19,180*)	17,850* (17,850*)		
40	non-supported					(21,160)	(17,190)	(14,100)	(11,900)	(9,920)	
	4-pt. supported					22,260* (22,260*)	20,720* (20,720*)	19,180* (19,180*)	17,850* (17,850*)	15,650* (15,650*)	
35	non-supported				(25,350*)	(20,720)	(16,970)	(14,100)	(11,680)	(9,700)	(8,150)
	4-pt. supported				25,350* (25,350*)	22,920* (22,920*)	20,940* (20,940*)	19,400* (19,400*)	17,850* (18,070*)	15,430 (16,750*)	11,020* (11,020*)
30	non-supported				(25,130)	(20,060)	(16,530)	(13,660)	(11,460)	(9,700)	(8,150)
	4-pt. supported				26,450* (26,450*)	23,800* (23,800*)	21,600* (21,600*)	19,840* (19,840*)	17,850* (18,070*)	15,430 (16,750*)	13,220* (14,770*)
25	non-supported			(30,640)	(22,700)	(19,400)	(15,870)	(13,220)	(11,240)	(9,470)	(8,150)
	4-pt. supported			31,740* (31,740*)	27,770* (27,770*)	24,690* (24,690*)	22,040* (22,040*)	20,080* (20,080*)	17,630 (18,510*)	15,210 (16,970*)	13,220 (15,650*)
20	non-supported	(50,920*)	(38,360)	(28,880)	(22,700)	(18,510)	(15,210)	(12,780)	(10,800)	(9,250)	(7,930)
	4-pt. supported	50,920* (50,920*)	41,880* (41,880*)	34,610* (34,610*)	29,320* (29,320*)	25,570* (25,570*)	22,920* (22,920*)	20,060 (20,720*)	17,190 (18,730*)	14,990 (16,970*)	13,000 (15,430*)
15	non-supported	(48,060)	(34,830)	(26,890)	(21,380)	(17,630)	(14,550)	(12,340)	(10,580)	(9,030)	(7,710)
	4-pt. supported	61,720* (61,720*)	46,070* (46,070*)	37,030* (37,030*)	31,080* (31,080*)	26,670* (26,670*)	22,920 (23,360*)	19,620 (20,940*)	16,970 (18,950*)	14,770 (17,190*)	12,780 (15,430*)
10	non-supported	(24,250*)	(31,520)	(24,690)	(20,060)	(16,530)	(13,880)	(11,900)	(10,140)	(8,510)	(7,490)
	4-pt. supported	24,250* (24,250*)	49,600* (49,600*)	39,020* (39,020*)	32,400* (32,400*)	26,450 (27,770*)	22,260 (24,030*)	18,950 (21,380*)	16,530 (18,950*)	14,330 (16,970*)	12,780 (15,210*)
5	non-supported	(14,330*)	(28,880)	(22,920)	(18,730)	(15,650)	(13,220)	(11,240)	(9,700)	(8,590)	(7,490)
	4-pt. supported	14,330* (14,330*)	35,930* (35,930*)	38,140 (40,340*)	30,640 (33,060*)	25,450 (28,210*)	21,600 (24,250*)	18,510 (21,360*)	16,090 (18,950*)	14,100 (16,570*)	12,560 (14,990*)
0	non-supported	(13,440*)	(26,230*)	(21,600)	(17,850)	(14,990)	(12,780)	(11,020)	(9,470)	(8,370)	(7,270)
	4-pt. supported	13,440* (13,440*)	26,230 (26,230*)	36,590 (40,560*)	29,540 (33,510*)	24,690 (28,210*)	20,940 (24,470*)	18,070 (21,160*)	15,870 (18,730*)	13,880 (16,530*)	12,340 (14,330*)
-5	non-supported	(14,770*)	(24,250*)	(20,720)	(16,970)	(14,330)	(12,340)	(10,580)	(9,250)	(8,150)	(7,270)
	4-pt. supported	14,770* (14,770*)	24,250* (24,250*)	35,710 (39,240*)	28,880 (32,620*)	24,030 (27,770*)	20,500 (23,800*)	17,630 (20,940*)	15,430 (18,290*)	13,660 (15,870*)	12,340 (13,660*)
-10	non-supported	(16,970*)	(24,470*)	(20,060)	(16,530)	(13,880)	(11,900)	(10,360)	(8,030)	(7,930)	(7,050)
	4-pt. supported	16,970* (16,970*)	24,470* (24,470*)	35,050 (37,250*)	28,210 (31,080*)	23,580 (26,670*)	20,060 (23,140*)	17,410 (20,060*)	15,430 (17,410*)	13,660 (14,990*)	12,340* (12,340*)
-15	non-supported		(25,570)	(20,060)	(16,310)	(13,660)	(11,680)	(10,140)	(9,030)		
	4-pt. supported		25,790* (25,790*)	34,170* (34,170*)	27,990 (29,100*)	23,360 (24,910*)	19,840 (21,600*)	17,190 (18,730*)	15,210 (15,870*)	13,440* (13,440*)	
-20	non-supported			(20,060)	(16,310)	(13,660)	(11,680)	(10,140)	(9,030)		
	4-pt. supported			29,980* (29,980*)	26,010* (26,010*)	22,260* (22,260*)	19,400* (19,400*)	16,750* (16,750*)	13,880* (13,880*)		

► For additional remarks see notes on page 3.

Working Diagram

MHL 380 reach 21.0 m (68'9")

► Work equipment: box-type boom monobloc 11.35 m (37'2"), dipperstick 8.95 m (29'3").



Lifting Capacity

MHL 380 reach 21.0 m (68'9")

► Work equipment: box-type boom monobloc 11.35 m (37'2"), dipperstick 8.95 m (29'3").

Height in m	Undercarriage stabilizers	Reach in m									
		6	7.5	9	10.5	12 (8.2*)	13.5	15	16.5	18	19.5
18	non-supported										
	4-pt. supported					8.2* (8.2*)					
16.5	non-supported						(7.8)				
	4-pt. supported						8.1* (8.1*)				
15	non-supported						(7.9*)				
	4-pt. supported						7.9* (7.9*)	7.6* (7.6*)			
13.5	non-supported						(7.9*)	(6.5)			
	4-pt. supported						7.9* (7.9*)	7.5* (7.5*)	7.2* (7.2*)		
12	non-supported						(7.9)	(6.5)	(5.3)		
	4-pt. supported						8.0* (8.0*)	7.6* (7.6*)	7.2* (7.2*)	6.1* (6.1*)	
10.5	non-supported					(8.8*)	(7.7)	(6.4)	(5.3)	(4.4)	
	4-pt. supported					8.8* (8.8*)	8.2* (8.2*)	7.7* (7.7*)	7.2* (7.2*)	6.9* (6.9*)	
9	non-supported					(9.2*)	(7.5)	(6.2)	(5.2)	(4.4)	(3.6)
	4-pt. supported					9.2* (9.2*)	8.5* (8.5*)	7.8* (7.8*)	7.4* (7.4*)	6.9* (6.9*)	5.7* (5.7*)
7.5	non-supported				(10.8*)	(8.9)	(7.3)	(6.0)	(5.1)	(4.3)	(3.6)
	4-pt. supported				10.8* (10.8*)	9.7* (9.7*)	8.8* (8.8*)	8.1* (8.1*)	7.5* (7.5*)	6.9* (7.0*)	5.9* (6.5*)
6	non-supported		(16.1*)	(13.2)	(10.4)	(8.4)	(7.0)	(5.8)	(4.9)	(4.2)	(3.5)
	4-pt. supported		16.1* (16.1*)	13.4* (13.4*)	11.5* (11.5*)	10.2* (10.2*)	9.2* (9.2*)	8.3* (8.3*)	7.7* (7.7*)	6.8* (7.1*)	5.9* (6.6*)
4.5	non-supported	(21.9)	(15.9)	(12.2)	(9.7)	(8.0)	(6.6)	(5.6)	(4.7)	(4.0)	(3.4)
	4-pt. supported	24.5* (24.5*)	18.3* (18.3*)	14.8* (14.8*)	12.4* (12.4*)	10.8* (10.8*)	9.5* (9.5*)	8.6* (8.6*)	7.6* (7.9*)	6.6* (7.2*)	5.8* (6.6*)
3	non-supported	(13.4*)	(14.3)	(11.2)	(9.0)	(7.5)	(6.3)	(5.3)	(4.5)	(3.9)	(3.3)
	4-pt. supported	13.4* (13.4*)	20.2* (20.2*)	16.0* (16.0*)	13.2* (13.2*)	11.3* (11.3*)	10.0 (9.9*)	8.6 (8.9*)	7.4 (8.0*)	6.5 (7.3*)	5.7 (6.7*)
1.5	non-supported	(7.9*)	(12.9)	(10.3)	(8.4)	(7.0)	(5.9)	(5.1)	(4.4)	(3.8)	(3.3)
	4-pt. supported	7.9* (7.9*)	18.3* (18.3*)	16.9* (16.9*)	13.9* (13.9*)	11.5 (11.7*)	9.7 (10.2*)	8.3 (9.1*)	7.2 (8.2*)	6.3 (7.4*)	5.6 (6.7*)
0	non-supported	(7.2*)	(12.0)	(9.6)	(7.9)	(6.6)	(5.6)	(4.8)	(4.2)	(3.6)	(3.2)
	4-pt. supported	7.2* (7.2*)	13.2* (13.2*)	16.5 (17.3*)	13.3 (14.3*)	11.1 (12.1*)	9.4 (10.4*)	8.1 (9.2*)	7.1 (8.2*)	6.2 (7.3*)	5.5 (6.6*)
-1.5	non-supported	(7.6*)	(11.5*)	(9.1)	(7.5)	(6.3)	(5.4)	(4.7)	(4.1)	(3.6)	(3.1)
	4-pt. supported	7.6* (7.6*)	11.9* (11.9*)	15.9 (17.4*)	12.9 (14.4*)	10.8 (12.2*)	9.2 (10.5*)	7.9 (9.2*)	7.0 (8.2*)	6.1 (7.3*)	5.5 (6.4*)
-3	non-supported	(8.3*)	(11.2*)	(8.9)	(7.3)	(6.1)	(5.2)	(4.5)	(4.0)	(3.5)	(3.1)
	4-pt. supported	8.3* (8.3*)	11.8* (11.8*)	15.6 (17.1*)	12.6 (14.2*)	10.5 (12.1*)	9.0 (10.4*)	7.8 (9.1*)	6.8 (8.0*)	6.1 (7.0*)	5.4* (6.0*)
-4.5	non-supported	(9.1*)	(11.2)	(8.7)	(7.1)	(6.0)	(5.1)	(4.4)	(3.9)	(3.5)	
	4-pt. supported	9.1* (9.1*)	12.1* (12.1*)	15.5 (16.5*)	12.5 (13.8*)	10.4 (11.8*)	8.9 (10.1*)	7.7 (8.8*)	6.8 (7.7*)	6.0 (6.6*)	
-6	non-supported		(11.2)	(8.7)	(7.1)	(6.0)	(5.1)	(4.4)	(3.9)	(3.5)	
	4-pt. supported		12.7* (12.7*)	15.3* (15.3*)	12.4 (12.9*)	10.3 (11.1*)	8.8 (9.6*)	7.7 (8.3*)	6.8 (7.2*)	6.0* (6.0*)	
-7.5	non-supported			(8.8)	(7.1)	(6.0)	(5.1)	(4.4)	(3.9)		
	4-pt. supported			13.8* (13.8*)	11.7* (11.7*)	10.1* (10.1*)	8.8* (8.8*)	7.5* (7.5*)	6.3* (6.3*)		

Height in ft.	Undercarriage stabilizers	Reach in ft.									
		20	25	30	35	40 (18,070*)	45	50	55	60	65
60	non-supported					(18,070*)					
	4-pt. supported					18,070* (18,070*)					
55	non-supported						(17,190)				
	4-pt. supported						17,850* (17,850*)				
50	non-supported						(17,410)	(14,330)			
	4-pt. supported						17,410* (17,410*)	16,750* (16,750*)			
45	non-supported						(17,410*)	(14,330)	(11,680)		
	4-pt. supported						17,410* (17,410*)	16,530* (16,530*)	15,870* (15,870*)		
40	non-supported						(17,410)	(14,330)	(11,900)	(9,700)	
	4-pt. supported						17,630* (17,630*)	16,750* (16,750*)	15,870* (15,870*)	13,440* (13,440*)	
35	non-supported					(19,400*)	(16,970)	(14,100)	(11,680)	(9,700)	
	4-pt. supported					19,400* (19,400*)	18,070* (18,070*)	16,970* (16,970*)	15,870* (15,870*)	15,210* (15,210*)	
30	non-supported					(20,280*)	(16,530)	(13,660)	(11,460)	(9,700)	(7,930)
	4-pt. supported					20,280* (20,280*)	18,730* (18,730*)	17,190* (17,190*)	16,310* (16,310*)	15,210* (15,210*)	12,560* (12,560*)
25	non-supported				(23,800*)	(19,620)	(16,090)	(13,220)	(11,240)	(9,470)	(7,930)
	4-pt. supported				23,800* (23,800*)	21,380* (21,380*)	19,400* (19,400*)	17,850* (17,850*)	16,530* (16,530*)	15,210 (15,430*)	13,000 (14,330*)
20	non-supported		(35,490*)	(29,100)	(22,920)	(18,510)	(15,430)	(12,780)	(10,800)	(9,250)	(7,710)
	4-pt. supported		35,490* (35,490*)	29,540* (29,540*)	25,350* (25,350*)	22,480* (22,480*)	20,280* (20,280*)	18,290* (18,290*)	16,970* (16,970*)	14,990 (15,650*)	13,000 (14,550*)
15	non-supported	(46,280)	(35,050)	(26,890)	(21,380)	(17,630)	(14,550)	(12,340)	(10,360)	(8,810)	(7,490)
	4-pt. supported	54,010* (54,010*)	40,340* (40,340*)	32,620* (32,620*)	27,330* (27,330*)	23,800* (23,800*)	20,940* (20,940*)	18,950* (18,950*)	16,750 (17,410*)	14,550 (15,870*)	12,780 (14,550*)
10	non-supported	(29,540*)	(31,520)	(24,690)	(19,840)	(16,530)	(13,880)	(11,680)	(9,920)	(8,590)	(7,270)
	4-pt. supported	29,540* (29,540*)	44,530* (44,530*)	35,270* (35,270*)	29,100* (29,100*)	24,910* (24,910*)	22,040* (21,820*)	18,950 (19,620*)	16,310 (17,630*)	14,330 (16,090*)	12,560 (14,770*)
5	non-supported	(17,410*)	(28,430)	(22,700)	(18,510)	(15,430)	(13,000)	(11,240)	(9,700)	(8,370)	(7,270)
	4-pt. supported	17,410* (17,410*)	40,340* (40,340*)	37,250* (37,250*)	30,640* (30,640*)	25,350 (25,790*)	21,380 (22,480*)	18,290 (20,060*)	15,870 (18,070*)	13,880 (16,310*)	12,340 (14,770*)
0	non-supported	(15,870*)	(26,450)	(21,160)	(17,410)	(14,550)	(12,340)	(10,580)	(9,250)	(7,930)	(7,050)
	4-pt. supported	15,870* (15,870*)	29,100* (29,100*)	36,370 (38,430*)	29,320 (31,520*)	24,470 (26,670*)	20,720 (22,920*)	17,850 (20,060*)	15,650 (18,070*)	13,660 (16,090*)	12,120 (14,550*)
-5	non-supported		(25,350)	(20,060)	(16,530)	(13,880)	(11,900)	(10,360)	(9,030)		(6,830)
	4-pt. supported	16,750* (16,750*)	26,230* (26,230*)	35,050 (38,360*)	28,430 (31,740*)	23,800 (26,890*)	20,280 (23,140*)	17,410 (20,280*)	15,430 (18,070*)	13,440 (16,090*)	12,120 (14,100*)
-10	non-supported	(18,290*)	(24,690)	(19,620)	(16,090)	(13,440)	(11,460)	(9,920)	(8,710)		(6,830)
	4-pt. supported	18,290* (18,290*)	26,010* (26,010*)	34,390 (37,690*)	27,770 (31,300*)	23,140 (26,670*)	19,840 (22,920*)	17,190 (20,060*)	14,990 (17,630*)	13,440 (15,430*)	11,900 (13,220*)
-15	non-supported	(20,060*)	(24,690)	(19,180)	(15,650)	(13,220)	(11,240)	(9,700)	(8,590)		
	4-pt. supported	20,060* (20,060*)	26,670* (26,670*)	34,170 (36,370*)	27,550 (30,420*)	22,920 (26,010*)	19,620 (22,260*)	16,970 (19,400*)	14,990 (16,970*)	13,220 (14,550*)	
-20	non-supported		(24,690)	(19,180)	(15,650)	(13,000)	(11,240)	(9,700)	(8,590)		
	4-pt. supported		27,990* (27,990*)	33,730* (33,730*)	27,330 (28,430*)	22,700 (24,470*)	19,400 (21,160*)	16,970 (18,290*)	14,990* (15,870*)	13,220* (13,220*)	
-25	non-supported			(18,400)	(15,650)	(13,220)	(11,240)	(9,700)	(8,590)		
	4-pt. supported			30,420* (30,420*)	25,790* (25,790*)	22,260* (22,260*)	19,400* (19,400*)	16,530* (16,530*)	13,880* (13,880*)		

► For additional remarks see notes on page 3.