

PRELIMINARY

Loading Machine | Better efficiency in modern lumber handling

THE LUMBER HANDLING **TASK FORCE**

ENGINE	176 kW (1900/min) 236 HP (1900/min)
WEIGHT	31 t - 33 t 68,343 lbs - 72,753 lbs
REACH	10.85 m (35,6')
GRAP	1.7 - 2.5 m ²

MACHINE FOR LUMBER HANDLING
MHL 454

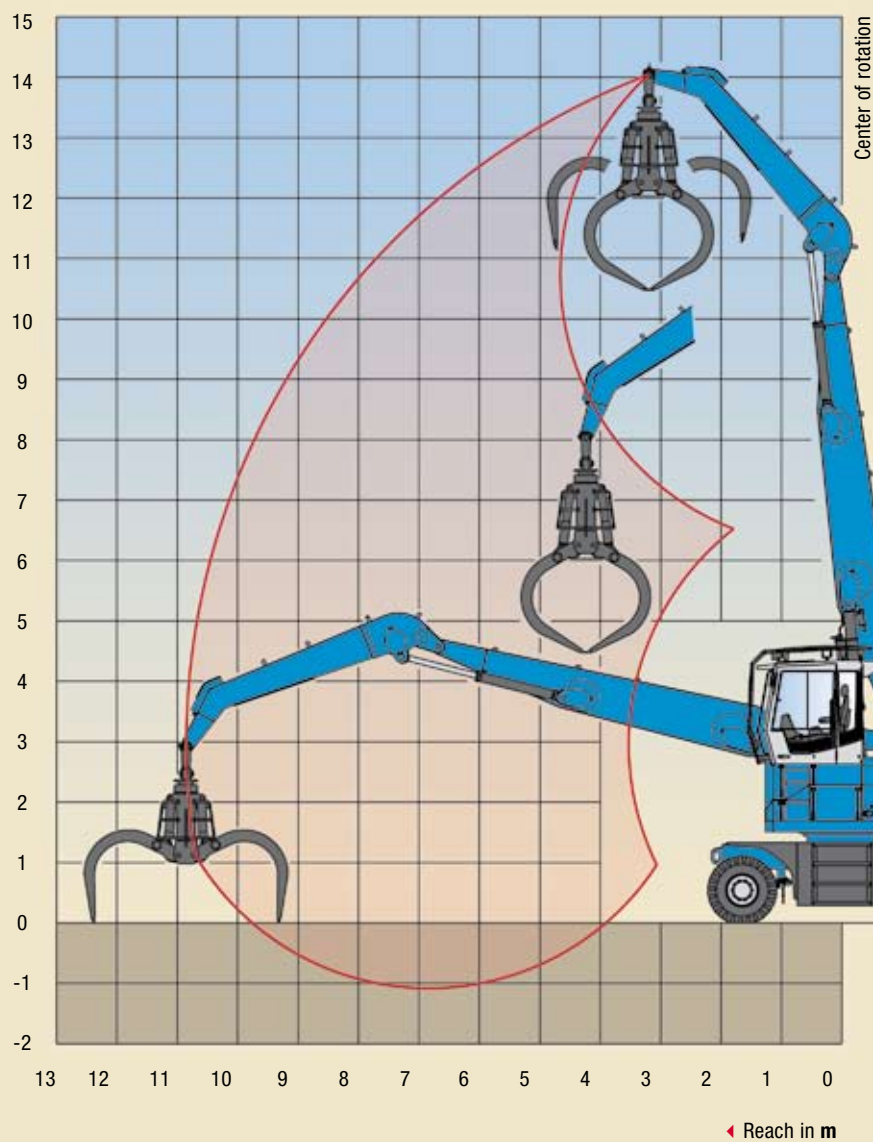


MHL 454 - THE INNOVATIVE 30t CLASS PICK + CARRY MACHINE FOR LOG YARD OPERATIONS

- ▶ Deutz 6-cylinder inline diesel engine meets emission standards COM III and EPA TIER II
- ▶ Central lubricating system
- ▶ Comfort cab with air conditioning as standard
- ▶ Powerful turbo-diesel engine rated at 176 kW (236 HP)
- ▶ Operating weight 31 t - 33 t (68,343 lbs - 72,753 lbs)
- ▶ Reach 10.85 m (35,6')

WORKING DIAGRAMM

MHL 454 REACH 10.85 m (35,6')



Work equipment:
box-type boom 7.85 m (26'),
dipperstick 4.5 m (15')

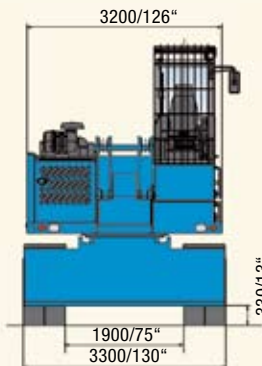
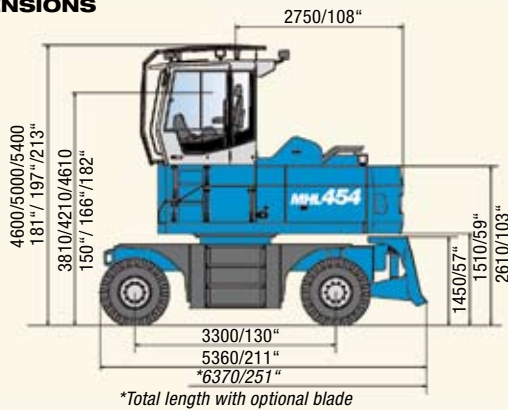
LIFTING CAPACITY

MHL 454 REACH 10.85 m (35,6')

HEIGHT m	UNDERCARRIAGE STABILIZERS	REACH m					
		3	4.5	6	7.5	9	10.5
12	non supported		9.5* (9.5*)	9.3 (9.6*)			
10.5	non supported			9.3 (10.6*)	6.5 (8.8*)		
9	non supported		12.0* (12.0*)	9.2 (10.7*)	6.5 (8.8)	4.8 (6.6*)	
7.5	non supported	19.0* (19.0*)	13.2* (13.2*)	8.9 (11.1*)	6.3 (8.7)	4.7 (6.5)	
6	non supported		13.2 (14.4*)	8.5 (11.7*)	6.1 (8.4)	4.6 (6.4)	
4.5	non supported		12.2 (15.6*)	8.0 (11.3)	5.8 (8.1)	4.5 (6.3)	3.5 (5.0)
3	non supported		11.3 (16.4*)	7.6 (10.8)	5.6 (7.9)	4.3 (6.1)	3.5 (4.9)
1.5	non supported		10.7 (11.5*)	7.2 (10.4)	5.4 (7.6)	4.2 (6.0)	3.4 (4.9)
0	non supported		10.3* (10.3*)	7.0 (10.2)	5.2 (7.5)	4.1 (5.9)	

The values are stated in tons (t) or lbs. The pump pressure for this table is 350 bar (5,075 psi). The values amount to 75 % of the static tipping load or 87 % of the hydraulic lifting force (marked *), in accordance with ISO 10567. When the machine is standing on solid and level ground, these values apply to slewing operations through 360°. The (...) values apply to a free-standing machine, in the lengthwise direction of the undercarriage, opposite to the dozer blade. The weight of the attached load hoisting implement (grab, load hook etc.) must be deducted from the carrying capacity values. In accordance with EC guidelines, hose-rupture safety valves on the lift cylinders and overload warning device are required for crane operations.

DIMENSIONS



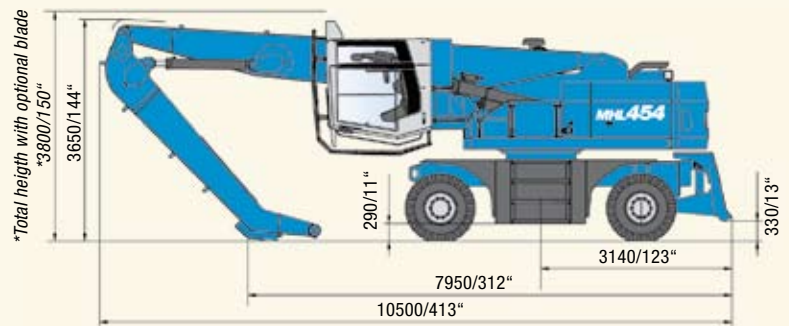
WITH THE MHL 454 WE SUPPLY A FULL-LINER PROGRAM FOR ALL LOGGING APPLICATIONS

► Economy in log yard applications

achieved through:

- a horizontal reach of 10.85 m
- box emptying accessibility for either side
- dynamic and infinitely variable traction drive
- engine rated as low-noise and low-emission according to COM III / TIER III Standards
- a turning radius of 5.5 m
- steering and steering reversal via joystick operation as standard
- Rear articulation of boom system insures first-rate stability and optimum lifting capacities.
- Efficient and safe control of the machine via the Linde power-demand-responsive hydraulic Syncro Control System for superlative fine tuning of all operational stages.
- Powerful travel drive with tandem hydrostatic drive.
- Swift empty runs through load-dependent speed of 25 km/h.
- Optimum driving and steering comfort with high level of safety and a reduction of wear and tear to tires through electronic, speed-dependent steering with automatic track sensing and correction.

TRANSPORT DIMENSIONS



- The elevation of the cab, coupled with its hydraulic fold-away system, allows both compliance with permissible transportation heights and saves time otherwise lost through lengthy setup procedures.
- The level of safety afforded by the unobstructed visibility from the operator's seat conduces to flexibility and economy.
- The multi-functional joysticks execute the entire range of operational commands, thus contributing to maximum operator performance with high safety margins.
- Optionally, via electronic controls, the airflow in both coolers may be reversed so as to blast out impurities without having to disrupt the particular task on hand.
- For grab operations, a filtering system may be supplied as an option. This system filters the hydraulic oil that flows from the grab to the machine.
- The hydraulic cushioning system within the loading mechanism encourages a lightness of approach in both work and driving technique, thus considerably lengthening the lifespan of the components.